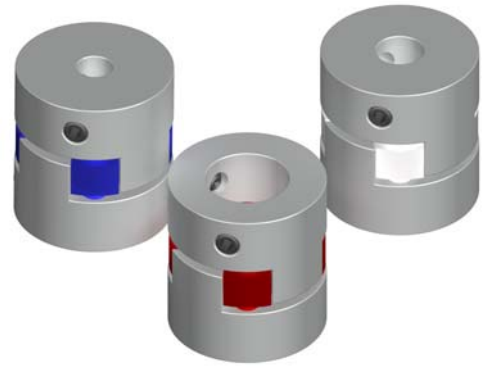


# COUPLING CROSS-FLEX

## SPIDER COUPLING

- Free of cinematic errors in transmission
- Replaceable disc
- Elevated torque transmission
- Admits few misalignments



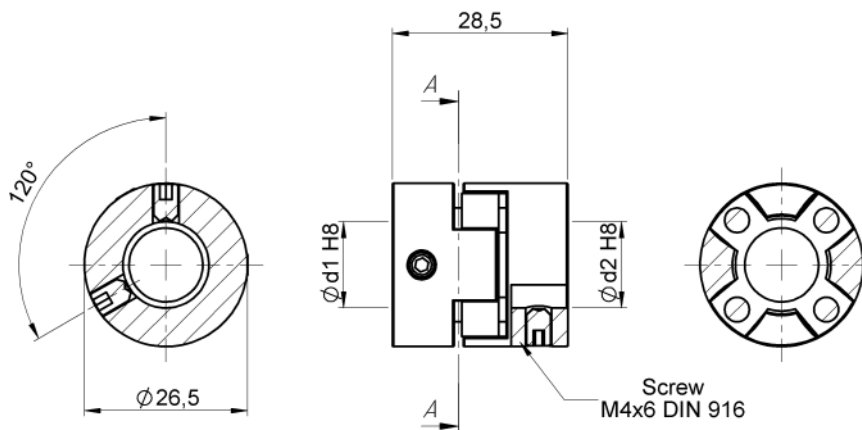
The CROSS-FLEX couplings are based on the use of a central disc. They are recommended for applications with some of the torque transmissions and with little misalignments. With the use of the CROSS-FLEX couplings, the angular misalignments may lead to small errors.

Radial misalignment does not produce any appreciable kinematic errors in transmission. Wear is minimum.

## TECHNICAL SPECIFICATIONS

Type	Torque Ncm	Clamping torque Ncm	Max.speed r.p.m.	Admissible max.misalignment			Hardness shore hadness	Maxi torsion torgue degree	Weight gr	Inertia gcm <sup>2</sup>
				Angular degree	Axial mm	Radial mm				
CFP 80	800	300	19.000	±1,3	±1	±0,22	80 (blue)	10	34	30
CFP 92	1500	300	19.000	±1,3	±1	±0,22	92 (white)	10	34	30
CFP 98	2500	300	19.000	±1,3	±1	±0,22	98 (red)	10	34	30

TYPE CFP 80  
TYPE CFP 92  
TYPE CFP 98



Ø int. d1/d2
04/04
06/06
08/08
10/10
12/12
14/14

Ordering code example: CFP 98 06/06