

# COUPLING LAMI-FLEX

## FLEXIBLE SHEET COUPLINGS

- Suitable for high speed
- High flexibility
- No cinematic errors in transmission
- High torsional rigidity



The LAMI-FLEX couplings are based on the use of some flexible steel or plastic membranes that pivot on the coupling, thus proportioning it a very good flexibility. The characteristics of LAMI-FLEX result in a transmission of great pre-

cision movement.

They are suitable for high rotation speeds, such as robots, machine-tools, turbines, dynamometers ...

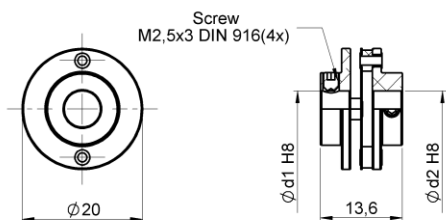
## TECHNICAL SPECIFICATIONS

Type	Torque Ncm	Clamping torque Ncm	Max.speed r.p.m.	Admissible max.misalignment			Torsion spring stiffness Ncm/rad	Radial spring stiffness N/mm	Weight gr	Inertia gcm <sup>2</sup>
				Angular degree	Axial mm	Radial mm				
LFP 2014	50	60	10.000	±2,5	±0,3	-	100	-	5	2,6
LFP 2016	50	60	10.000	±3	±0,4	±0,2	45	125	6	2,8
LFA 2213	20	20	10.000	±2	±0,3	±0,3	14	3	9,5	3,2
LFA 3019	80	80	12.000	±3	±0,4	±0,4	150	6	16	19
LFA 2519	40	65	12.000	±2,5	±0,4	±0,25	22	60	16	13,5
LFA 2525	40	65	12.000	±2,5	±0,4	±0,25	22	60	18	15
LFA 3022	60	80	12.000	±2,5	±0,4	±0,3	30	40	30	35
LFA 3027	60	80	12.000	±2,5	±0,4	±0,3	30	40	32	37
LFA 3850	200	60	8.000	±2,5	±0,8	±0,8	250	-	60	135
LFA 3832	200	60	8.000	±2,5	±0,8	±0,3	250	-	70	112



TYPE LFP 2014

Ø int. d1/d2  
02/02  
02/04  
04/04  
06/06

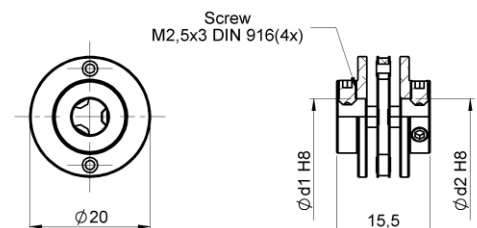


Ordering code example: LFP 2014 04/04



TYPE LFP 2016

Ø int. d1/d2  
02/02  
02/04  
04/04  
06/06

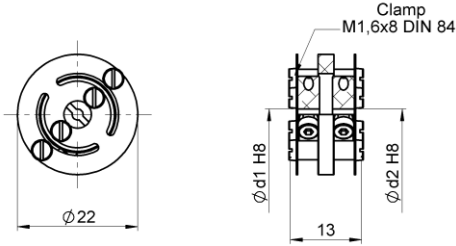


Ordering code example: LFP 2016 02/04



TYPE LFA 2213

Ø int. d1/d2
02/02
02/04
04/04
06/06

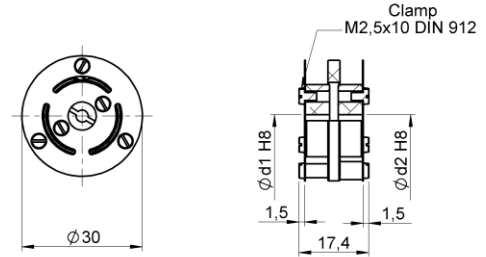


Ordering code example: LFA 2213 04/04



TYPE LFA 3019

Ø int. d1/d2
03/03
04/04
05/06
06/06
06/08

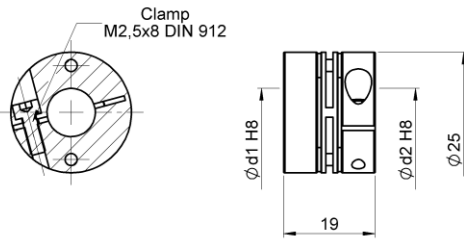


Ordering code example: LFA 3019 06/08



TYPE LFA 2519

Ø int. d1/d2
06/06
06/10
08/08
10/10

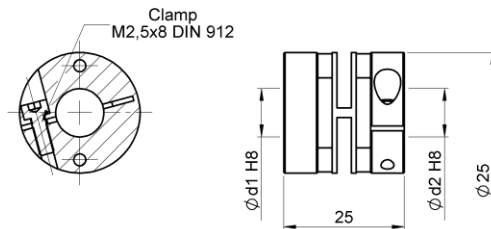


Ordering code example: LFA 2519 06/06



TYPE LFA 2525

Ø int. d1/d2
06/06
06/10
08/08
10/10
10/12
12/12

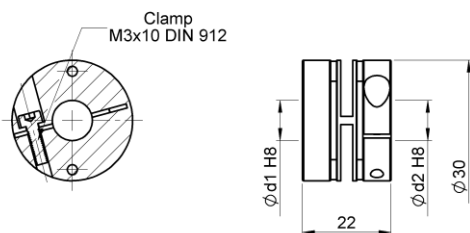


Ordering code example: LFA 2525 06/06



TYPE LFA 3022

Ø int. d1/d2
06/06
06/10
10/10
10/12
12/12
14/14
16/16

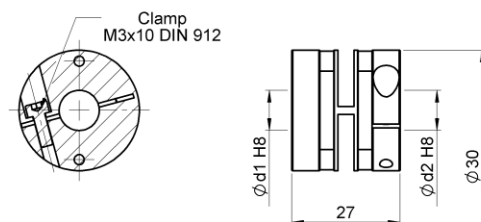


Ordering code example: LFA 3022 10/10



TYPE LFA 3027

Ø int. d1/d2
06/06
06/10
10/10
10/12
12/12
14/14
16/16

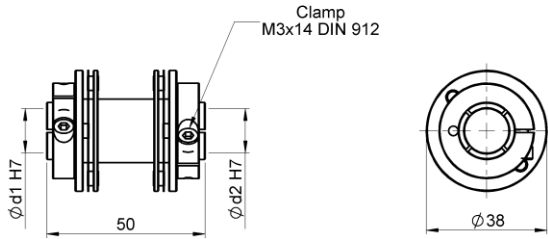


Ordering code example: LFA 3027 12/12



### MODELO LFA 3850

Ø int. d1/d2
06/06
10/10
10/12
10/14
12/12
14/14

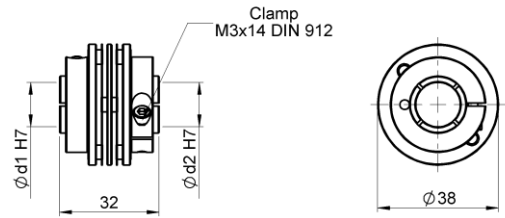


Ordering code example: LFA 3850 06/06



### MODELO LFA 3832

Ø int. d1/d2
06/06
06/10
10/10
10/12
12/12
14/14



Ordering code example: LFA 3832 06/06